

# SMART EDGE - Installation

The **SMART EDGE – R.E.F™** is installed around the entire perimeter of a building as well as along any roof valleys.

The **SMART EDGE – R.E.F™** is installed on top of the last purlin or tile batten or under the last tile batten if required.

## Installation process

1. Each 2.8m length of **SMART EDGE – R.E.F™** is held firmly against the front face of the previously installed fascia and fixed in place with a galvanised clout into the purlin or truss. Fixings should be as high as possible on the flashing (Fig 1)

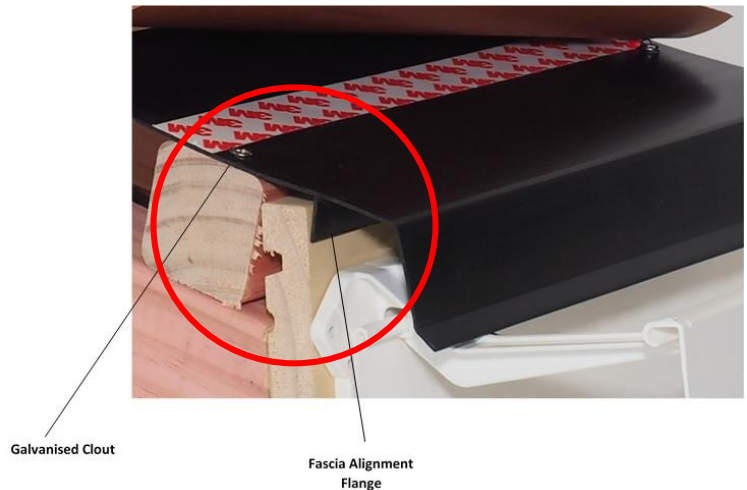


Fig 1

2. The double sided tape should have the front face removed by 130mm to allow the next length of **SMART EDGE – R.E.F™** installed and lapped by 100mm. (Fig 2)



Fig 2

3. The fascia alignment flange must also be removed for 100mm. This is easily done carefully with a sharp blade. (Fig 3)



Fig 3

**Repeat this process around the entire perimeter.**

## Jointing

- Each lapped joint should have a strip of 48mm PVC adhesive tape laid over it. This should extend from the 3mm up turn at the top of the flashing down to the fascia alignment flange. (Fig 4)

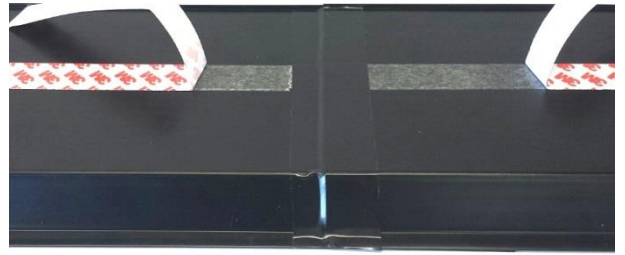


Fig 4

## Jointing on Hips

- This should be done in a similar way except the **SMART EDGE – R.E.F™** needs to be mitred and does not overlap itself. The PVC jointing tape should be applied as previously noted.

## Roofing Paper or Membrane Installation

- The 3M adhesive tape protective strip should be completely removed during the installation of the roofing paper or membrane and the membrane or paper firmly pressed onto it. (Fig 5)



Fig 5

- Any excess paper should be CAREFULLY cut off at the front edge of the **SMART EDGE – R.E.F™** so as not to cause damage.  
(If damage occurs a section of the flashing must be replaced)
- The roofing iron or tiles can then be installed as per the manufacturer's instructions.

**Note:** Fixings may be placed through the adhesive tape